

# **INDOFINE Chemical Company, Inc.**

121 Stryker Lane, Bldg. 30, Suite 1 • Hillsborough, NJ 08844 • U.S.A.

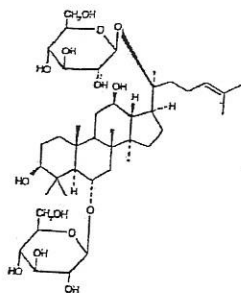
Phone: (908) 359-6778 • FAX: (908) 359-1179

website: [www.indofinechemical.com](http://www.indofinechemical.com)

e-mail: [chemical@indofinechemical.com](mailto:chemical@indofinechemical.com)

## CERTIFICATE OF ANALYSIS

<u>Catalog Number:</u>	020101S
<u>Product Name:</u>	<b>GINSENOSIDE Rg1 with HPLC</b>
<u>Chemical Family:</u>	Saponins
<u>Cas Number:</u>	[22427-39-0]
<u>Lot Number:</u>	1411523
<u>Chemical Formula:</u>	$C_{42}H_{72}O_{14}$
<u>Molecular Weight:</u>	801.02
<u>Appearance:</u>	White powder
<u>Loss on drying:</u>	0.8%
<u>Storage:</u>	This product is stable at ambient temperature for several weeks. However, optimum long-term storage may require lower temperature (<-18°C). Place in a desiccator under vacuum before use. Protect from light.
<u>Purity(HPLC):</u>	99.14%





# INDOFINE Chemical Company, Inc.

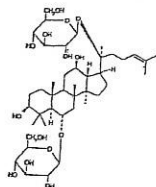
121 Stryker Lane, Bldg. 30, Suite 1 • Hillsborough, NJ 08844 • U.S.A.

Phone: (908) 359-6778 • FAX: (908) 359-1179

website: [www.indofinechemical.com](http://www.indofinechemical.com)

e-mail: [chemical@indofinechemical.com](mailto:chemical@indofinechemical.com)

## HPLC ANALYSIS

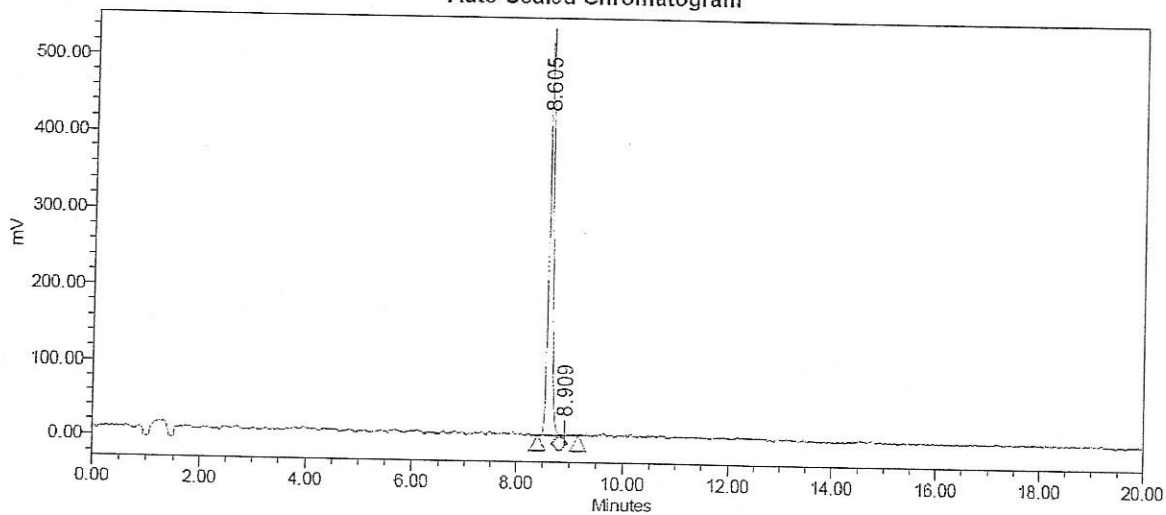


Catalog No.: 020101S  
Product Name: Ginsenoside Rg1  
Lot No.: 1411523

### SAMPLE INFORMATION

Sample Name:	Ginsenoside Rg1	Sample Set Name:	
Sample Type:	Unknown	Acq. Method Set:	Ginsenoside Rg1
Vial:	1:D,7	Processing Method:	Samples1
Injection #:	1	Channel Name:	SATIN
Injection Volume:	10 ul	Proc. Chnl. Descr.:	
Run Time:	22.0 Minutes		

Auto-Scaled Chromatogram



#### Peak Results

	Name	RT	Area	% Area	USP Plate Count	USP Resolution
1		8.605	2797876	99.14	62518.75	
2		8.909	24405	0.86	26291.33	2.14